

# **NORTH CAMPUS & WEST HILLS CENTER RESOURCE GUIDE**



**FOOD**



**HOUSING**



**CLOTHING/CONSIGNMENT STORES**



**CRISIS INTERVENTION  
HOTLINES**



**FREE HEALTH CLINICS**



**OTHER RESOURCES**

Provided by:

**JOB PLACEMENT & CAREER SERVICES**  
CCAC-North Campus  
8701 Perry Highway, Pittsburgh, PA 15237  
[www.ccac.edu](http://www.ccac.edu)

Last Updated: March 2018

# Table of Contents

<b>Food and Housing Resources .....</b>	<b>3</b>
<b>Allegheny County .....</b>	<b>3</b>
<b>Beaver County .....</b>	<b>6</b>
<b>Butler County .....</b>	<b>8</b>
<b>Clothing/Consignment Stores .....</b>	<b>10</b>
<b>Crisis Intervention Hotlines .....</b>	<b>12</b>
<b>Free Health Clinics .....</b>	<b>14</b>
<b>Transportation Services .....</b>	<b>15</b>
<b>Homeless Services .....</b>	<b>16</b>

## FOOD and HOUSING RESOURCES

### ALLEGHENY COUNTY

Housing Assistance		
<b>Allegheny County Bureau of Hunger and Housing Services</b> One Smithfield Street, Pittsburgh, PA 15222	Housing & Food Assistance	412-350-4354 <a href="http://www.alleghenycounty.us">www.alleghenycounty.us</a>
<b>Urban League of Greater Pittsburgh</b> 610 Wood Street Pittsburgh, PA 15222	Housing & Food Assistance	<a href="http://www.ulpgh.org">www.ulpgh.org</a>
<b>Neighbor-Aid (United Way)</b> 5 PPG Place, 2 <sup>nd</sup> floor, Pittsburgh, PA 15222	Pittsburgh crisis relief fund- helping to meet food and housing needs	412-255-1155 <a href="http://www.neighbor-aid.org">www.neighbor-aid.org</a>
<b>North Hills Community Outreach</b> 1975 Ferguson Road Allison Park, PA 15101	Food pantries, utility assistance, emergency financial assistance for housing	412-487-6316 <a href="http://www.nhco.org">www.nhco.org</a>
<b>Northside Common Ministries</b> PO Box 99861 Pittsburgh, PA 15233	Housing & Food Assistance	412-323-1163
<b>Community Human Services</b> 301 Third Street Pittsburgh, PA 15222	Housing & Food Assistance	412-765-3302
<b>Salvation Army of Western PA</b>	Housing & Food Assistance	Many Locations in West and North areas <a href="http://www.wpa.salvationarmy.org">www.wpa.salvationarmy.org</a>

<b>Food Assistance</b>		
<b>CCAC-North Campus Food Pantry</b>		Monday & Tuesday 1:00 p.m.-4:00 p.m. Last Tuesday of every month 1:00 p.m.- 6:00 p.m.
<b>Supplemental Nutrition Assistance Program (SNAP)</b> Department of Public Welfare	Formerly called Food Stamps	You can apply online at COMPASS <a href="http://www.compass.state.pa.us">www.compass.state.pa.us</a>
<b>Greater Pittsburgh Community Food Bank</b>	Resource to find all the local food banks - search by zip code	412-460-3663 <a href="http://www.pittsburghfoodbank.org">www.pittsburghfoodbank.org</a>
<b>WIC</b>	Women, Infants & Children Program	Downtown Pittsburgh – 412-350-7240 McKees Rocks – 412-331-5410 Online – <a href="http://www.pawic.com">www.pawic.com</a>

<b>Allegheny County Food Pantries</b> North Boros & West Hills	<b>The following provide meals on select days:</b>
<b>North Hills Food Bank</b> 845 Perry Highway Pittsburgh, PA 15229 412-366-7477	Tuesday & Thursday 10:00 a.m. to 1:00 p.m.
<b>New Hope U.M. Church</b> 114 W. North Ave. Pittsburgh, PA 15212 412-321-3343	Tuesday & Thursday 11 a.m. to 1 p.m. Sunday 3:00 p.m. to 5:00 p.m.
<b>Pleasant Valley</b> 1601 Brighton Rd Pittsburgh, PA 15212 412-321-1606	Monday, Wednesday & Friday 12:00 p.m. to 1:00 p.m.

<p><b>Produce to People – North Side</b>  50 Montgomery Pl.  Pittsburgh, PA 15212  412-460-3663 x 727</p>	<p>3<sup>rd</sup> Saturday of the Month  10:00 a.m. to 12:00 p.m.</p>
<p><b>Salvation Army-Chartiers Valley</b>  505 Washington Avenue  Carnegie, PA 15106  412-276-4757</p>	<p>1<sup>st</sup> &amp; 3<sup>rd</sup> Wednesday of Month  10:00 a.m. to 2:00 p.m.</p>
<p><b>Our Lady’s Food Pantry</b>  1504 Woodcrest Avenue  Coraopolis, PA 15108  412-264-5140</p>	<p>Call to schedule an appointment</p>
<p><b>Sewickley Community Center Food Pantry</b>  412-741-5430  Food Pantry serves zip code 15143 plus some surrounding areas.</p>	<p>Wednesday  11:30 a.m. to 1:00 p.m.</p>
<p><b>St. Mary’s Red Door</b>  107 Boulevard of the Allies  Pittsburgh, PA 15222  Dial 412-261-0110  x314 to reach the pantry.</p>	<p>Monday -Saturday  Bagged Lunch  10:30 a.m. to 11:30 a.m.</p>
<p><b>Salvation Army-Social Services</b>  100 W. North Ave.  Pittsburgh, PA 15212  412-394-4885</p>	<p>Sunday: 11:00 a.m.  Must attend worship service before meal</p>
<p><b>Light of Life Rescue Mission</b>  412-258-6100</p> <p>Administrative &amp; Women’s Shelter  913 Western Ave.  Pittsburgh, PA 15212</p> <p>Food Kitchen &amp; Men’s Shelter  10 E. North Ave.  Pittsburgh, PA 15212</p>	<p>Monday-Friday  Breakfast  Women – 7:30 a.m. to 8:00 a.m.  Men – 8:00 a.m. to 9:00 a.m.  (same dining room)</p> <p>Monday-Friday  Dinner  5:00 p.m. to 6:00 p.m.  (different dining rooms)</p>

**BEAVER COUNTY**

<b>Housing Assistance</b>		
<b>Women's Center</b>	724-775-0131	Beaver County Agency
<b>HELP House</b>	724-775-4535	Beaver County Agency
<b>Friendship Homes</b>	724-846-1089	Beaver County Agency
<b>Housing Authority</b>	724-775-1220	Beaver County Agency
<b>Fair Housing Office</b>	724-846-6400	Beaver County Agency
<b>Food Assistance</b>		
<b>Beaver County Food Bank</b>	724-891-3605	
<b>Center for Hope, Ambridge</b>	724-251-4899	
<b>WIC</b>	866-942-2778	1317 Seventh Ave, Beaver Falls Satellite office are in Aliquippa, Ambridge, Freedom & Midland

<b>Beaver County Food Pantries</b>	<b>The following provide meals on select days:</b>
<b>Christ Lutheran Church</b> 409 11th Street, Beaver Falls	Monday 4:00 p.m. to 5:00 p.m.
<b>The Ladle</b> 9th and Maplewood, Ambridge	Monday 5:30 p.m. to 6:30 p.m.
<b>Central United Methodist</b> 1227 6 <sup>th</sup> Avenue, Beaver Falls	Tuesday 12:30 p.m. to 1:00 p.m.

<p align="center"><b>Church in the Round</b> Griffith &amp; Woodrow Streets, Aliquippa</p>	<p align="center">Tuesday, Wednesday &amp; Thursday 12:00 p.m. to 1:00 p.m.</p>
<p align="center"><b>Christ Episcopal</b> 1217 3<sup>rd</sup> Avenue, New Brighton</p>	<p align="center">Wednesday &amp; Thursday 12:00 p.m. to 1:00 p.m.</p>
<p align="center"><b>First Presbyterian Church</b> 1103 8th Avenue, Beaver Falls</p>	<p align="center">Wednesday &amp; Friday 4:00 p.m. to 5:00 p.m.</p>
<p align="center"><b>Grace Lutheran Church</b> 393 Adams Street, Rochester</p>	<p align="center">Thursday 6:00 p.m. to 7:00 p.m.</p>
<p align="center"><b>Agape Mobile Soup Kitchen</b> Call 724-375-2008</p>	<p align="center">Friday 5:00 p.m. to 6:00 p.m.</p>
<p align="center"><b>First Methodist Church</b> 716 Third Avenue, New Brighton</p>	<p align="center">Friday 4:00 p.m. to 5:00 p.m.</p>
<p align="center"><b>Salvation Army</b> 414 16<sup>th</sup> Street, Beaver Falls</p>	<p align="center">Sunday 4:00 p.m. to 5:00 p.m.</p>
<p align="center"><b>Beaver Falls Breakfast Ministry</b> 9:00 a.m. to 11 a.m.</p>	<p align="center"><i>1st Saturday of Month</i> Central United Methodist Church, 1227 Sixth Ave</p> <p align="center"><i>2nd Saturday of Month</i> Calvary Presbyterian Church, 1099 Sixth Ave.</p> <p align="center"><i>3rd Saturday of Month</i> First Christian Church 1401 Sixth Avenue</p> <p align="center"><i>4th Saturday of Month</i> First Baptist Church 616 Sixth Avenue</p>

**BUTLER COUNTY**

<b>Housing Assistance</b>		
<b>Housing Authority of Butler County</b>	(724) 287-6797	
<b>The Lighthouse Foundation Butler</b>	724-898-4673	The Lighthouse Foundation offers both emergency shelter (up to 60 days) and transitional living (from 18-24 months).
<b>New Castle City Rescue Mission</b>	412-652-4321	Shelters for both men and women/children.
<b>Food Assistance</b>		
<b>WIC</b>	866-942-2778	323 Sunset Drive, Suite 1, Butler Satellite offices are located in Cranberry, Mars, Evans City and Saxonburg

<b>Butler County Food Pantries</b>	<b>The following provide meals on select days:</b>
<b>Cabot United Methodist Church Food Bank</b> 707 Winfield Rd. Cabot, PA 16023 724-352-2074	3 <sup>rd</sup> Wednesday 5:30 p.m. to 8:00 p.m. Distributes from former Winfield Elementary School
<b>Family Life Ministry</b> Church of God Prophecy 932 Mercer Rd Butler, PA 16001	3 <sup>rd</sup> Saturday 9:00 a.m. to 10:30 a.m.
<b>Evans City Food Cupboard</b> St. Peters Lutheran Church 202 Van Buren St. Evans City, PA 16033 724-538-0542	1 <sup>st</sup> & 3 <sup>rd</sup> Friday: 8:30 a.m. to 10:30 a.m. Must call prior to distribution to register



<p><b>Gleaners Food Cupboard</b>  St. Ferdinand's Church (Annex)  2535 Rochester Rd.  Cranberry Twp., PA 16066  724-776-2888</p>	<p>4<sup>th</sup> Wednesday 9:00 a.m. to 10:00 a.m.  Nov &amp; Dec: 2<sup>nd</sup> Wednesday 9:00 a.m. – 10:00 a.m.  Sign-up prior to distribution date.  Emergency food (as available).</p>
<p><b>Lighthouse</b>  1302 East Cruikshank Rd.  Butler, PA 16002  724-586-5554 ext. 29</p>	<p>Every other Thursday 2:00 p.m. to 6:00 p.m.  Every other Friday (opposite of Thursday Distribution) 9:00 a.m. to 1:00 p.m.</p>
<p><b>Loaves and Fishes Food Cupboard</b>  Summit United Presbyterian Church  650 Saxonburg Rd  Butler, PA 16002  724-287-2378</p>	<p>Last Saturday of Month: 8:30 a.m. to 10:00 a.m.  w/ exception of Thanksgiving &amp; Christmas – the Saturday before</p>
<p><b>Mount Chestnut Presbyterian Church</b>  727 West Old Route 422  Butler, PA 16001  724-287-7601</p>	<p>1<sup>st</sup> &amp; 3<sup>rd</sup> Monday  6:30 p.m. to 7:30 p.m.</p>
<p><b>Portersville Food &amp; Fellowship for People</b>  Muddy Creek Volunteer Fire Station  1151 W Portersville Rd.  Portersville, PA 16051  724-368-9532</p>	<p>Wednesday  6:00 p.m. to 7:00 p.m.</p>
<p><b>Southwest Butler “Zion” County Food Bank</b>  557 Perry Highway  Harmony, PA 16037  724-453-4184</p>	<p>3<sup>rd</sup> Tuesday  7:00 p.m. to 8:00 p.m.</p>
<p><b>Salvation Army</b>  313 W. Cunningham St.  Butler, PA 16003  724-287-5532</p>	<p>Tuesday &amp; Wednesday  1:30 p.m. to 3:30 p.m.</p>
<p><b>St. Vincent DePaul</b>  157 North Elm  Butler, PA 16001  724-431-2842</p>	<p>Monday – Friday  8:30 a.m. to 10:00 a.m.</p>

## CLOTHING / CONSIGNMENT STORES

### **Goodwill of Southwestern Pennsylvania**

Robert S. Foltz Building  
118 52<sup>nd</sup> Street  
Pittsburgh, PA 15201  
Phone: 412-481-9005  
<http://www.goodwillswpa.org>

Goodwill stores sell thousands of donated goods, with everyday low prices, and new items placed on the floor hourly.

There are twenty-six (26) Goodwill Stores in the Pittsburgh, PA area including Banksville, Belle Vernon, Butler, Centre Avenue, Cheswick, Cranberry, Gibsonia, Greensburg, Heidelberg, Lawrenceville, Monroeville, Mount Pleasant, Murrysville, Natrona Heights, North Hills, North Huntingdon, North Side, North Versailles Outlet, Peters Township, Robinson, Rochester, South Side, Uniontown, Washington, Wexford, and Whitehall, PA.

Call 412-481-9005 for store locations and hours or go to the website  
<http://www.goodwillswpa.org/goodwill-stores>

### **Salvation Army**

855 E Carson St  
Pittsburgh, PA 15203  
Phone 412-481-7900  
Hours 9 a.m. to 6 p.m.

There are ten (10) Salvation Army Stores in Western PA in addition to the Pittsburgh location, including, Butler, Latrobe, New Castle, North Apollo, North Huntingdon, Sharon, Somerset, Uniontown, and West Mifflin.

Call 412-481-7900 for store locations and hours or go to the website  
<https://wpa.salvationarmy.org/WesternPennsylvania/family-thrift-stores>

### **Society of St. Vincent De Paul**

1501 Reedsdale St., Suite 3003  
Pittsburgh, PA 15233  
Phone: 412-321-1071

There are seven (7) St. Vincent DePaul Stores in Pittsburgh area including, Penn Hills, Castle Shannon, Coraopolis, Butler, Sharpsburg, Monroeville, and Swissvale.

Call 412-321-1071 for store locations and hours or go to the website  
<https://svdpitt.org/stores/store-locations-directions/>

## **CLOTHING / CONSIGNMENT STORES (cont.)**

### **Animal Advocates Resale Store**

35 Wabash Street, Pittsburgh (West End), PA 15220  
Phone: 412-928-9837

### **Community Thrift Center**

- 3255 Babcock Blvd, Pittsburgh PA 15237  
Phone: 412-366-4010
- 2226 Noblestown Road, Pittsburgh (West End), PA 15202  
Phone: 412-937-9345

### **Focus on Renewal Sto-Rox Neighborhood Corporation Sarah's Second Chance Thrift Store**

601 Chartiers Ave, McKees Rocks, PA 15146  
Phone: 412-458-3566

### **Genesis of Pittsburgh, Inc.**

141 North Fremont Avenue, Pittsburgh, PA 15202  
Phone: 412-766-4934

Offers maternity clothing, baby clothing and items including bassinets, cribs, car seats, infant carriers, bath tubs, diapers, and baby formula.

### **Lifeline of Southwest Pennsylvania**

239 Fourth Avenue, Pittsburgh, PA 15222  
Phone: 412-562-0543

The Center has a "Mother's room" with free maternity clothes to help women during their pregnancy, baby supplies, diapers, and clothes for infants and children up to size 3.

- Call in advance for hours or if you need a specific item.

### **Northshore Community Alliance Carol's Closet**

1439 N. Franklin Street, Pittsburgh, PA 15233  
Phone: 412-322-7400

### **Pittsburgh Temple Service Center – Project Bundle-Up**

225 West Main Street, Carnegie, PA 15106  
Phone: 412-276-4757

Children from low income families can receive free winter outerwear items, coats, boots, and more. Items are offered for seniors too.

### **Red White & Blue Thrift Store**

935 Ohio River Blvd., Pittsburgh (Avalon), PA 15202  
Phone: 412-766-6098

### **Treasure House Fashions**

7607 McKnight Road, Pittsburgh PA 15237  
Phone: 412-364-3256

## CRISIS INTERVENTION

The following 24-hour Pittsburgh help and crisis intervention hotlines are available to help anyone affected by violence, domestic abuse, child abuse, and elder abuse.

<b>National Agencies</b>	
Child Abuse Childline	1-800-932-0313
(The) Childhelp National Child Abuse Hotline	1-800-422-4453
National Center for Missing & Exploited Children	1-800-843-5678
National Domestic Violence Hotline	1-800-799-7233
National Runaway Safeline	1-800-786-2929
National Center for Elder Abuse	1-800-RUNAWAY (1-800-786-2929)
<b>Local Agencies</b>	
Allegheny County Office of Children, Youth, and Families (CYF)	412-473-2000
Alle-Kiski Hope Center, Tarentum, PA (24-Hour Hotline)	1-888-299-4673
(The) Blackburn Center Against Domestic and Sexual Violence	1-888-832-2272
Center for Victims	1-866-644-2882
Crisis Center North (Additional services available through the Office of Counseling Services-CCAC North -412-369-3614)	412-364-5556 or 1-866-782-0911
Domestic Violence Services of South Western PA	1-800-791-4000
Fayette County Crime Victim's Hotline	724-437-3737
Fayette County Domestic Violence Hotline	724-439-9500
Greene County Women's Shelter	724-852-2463

**CRISIS INTERVENTION (cont.)**

Northside Common Ministries-Pleasant Valley Shelter 1601 Brighton Road, Pittsburgh, PA (Emergency Shelter for Adult Men)	412-321-4272
ORR Compassionate Center 6023 Harvard Street #2, Pittsburgh, PA (Emergency Shelter/24 hour Respite Care for Single Men and Women)	412-362-3550
Pennsylvania Child Abuse/Neglect Hotline	1-800-932-0313
Pennsylvania Department of Drug and Alcohol Programs	1-800-662-HELP (1-800-662-4357)
Pittsburgh Area Elder Abuse Hotline	1-800-344-4319 or 412-350-5460
re:solve Crisis Network	1-888-7-YOUCAN (1-888-796-8226)
Salvation Army Family Crisis Center 424 Third Avenue, Pittsburgh, PA	412-362-0891
Victim Outreach Intervention Center (VOICe) 111 S. Cliff St., Butler, PA	724-283-8700 or 1-800-400-8551
Womansplace East	412-765-2661
Women's Center & Shelter of Greater Pittsburgh	412-687-8005 or 1-877-338-8255
YMCA of McKeesport	412-664-9168

## FREE HEALTH CLINICS

<p><b>North Side Christian Health Center</b> 816 Middle St. Pittsburgh, PA 15212 412-321-4001</p> <p>Northview Heights Center 525 Mount Pleasant Rd. Pittsburgh, PA 15214 412-322-7500</p>	<p><b>Hours of Operation</b> Monday, Wednesday &amp; Friday: 8:30 a.m. to 5:00 p.m. Tuesday &amp; Thursday: 8:30 a.m. to 7:00 p.m. Saturday: 8:30 a.m. to 12:00 p.m.</p>
<p><b>Primary Care Health Services, Inc.</b></p> <p>West End Dental Office 441 S. Main St. Pittsburgh, PA 15220 412-244-4970 or 412-922-5636</p> <p>West End Health Center 415 Neptune St. Pittsburgh, PA 15220 412-921-7200</p>	<p><b>Hours of Operation</b> Monday: 11:00 a.m. to 7:00 p.m. Tuesday: 9:00 a.m. to 5:00 p.m.</p> <p>Monday: 10:30 a.m. to 7:00 p.m. Tuesday – Friday: 8:30 a.m. to 4:30 p.m.</p>
<p><b>Pleasant Valley</b> 1601 Brighton Rd Pittsburgh, PA 15212 412-321-1606</p>	<p>CALL FOR HOURS</p>
<p><b>University of Pittsburgh</b> Matilda Theiss Health Center 373 Burrows St. Pittsburgh, PA 15213 412-383-1550</p>	<p><b>Hours of Operation</b> Monday, Tuesday, Thursday &amp; Friday: 8:30 a.m. to 4:30 p.m. Wednesday: 8:30 a.m. to 6:00 p.m.</p>

## TRANSPORTATION SERVICES

### Port Authority of Allegheny County

The Port Authority offers bus service from the North Side and Downtown Pittsburgh to the North Hills. The route 12 bus runs along the McKnight corridor and has connection points with our shuttle service.

Check the website for current route and fare information.

[www.portauthority.org](http://www.portauthority.org)

### CCAC North Campus Shuttle Service

The Community College of Allegheny County's North Campus offers a free shuttle service. The shuttle makes four runs Monday through Thursday during peak times in the morning and early afternoon, with stops near bus stops on Perrymont Road, Babcock Boulevard and Cumberland Road, before returning to North Campus. During inclement weather, the shuttle also transports students and faculty from the lower campus parking lot to the upper parking lot.

[Click HERE](#) to view larger map or stop by the Information Desk for a copy of the map.



# HOMELESS SERVICES



**HOMELESS CHILDREN'S EDUCATION FUND**

creating hope through learning  
www.homelessfund.org

## OUR MISSION

To advance the education of children and youth experiencing homelessness, guiding them to be productive, empowered citizens. As a national model for addressing the educational needs of unstably-housed children and youth, HCEF leads a collaborative effort among regional partners by providing educational programs and services in Allegheny County and advocating for policy and system improvement.

## HOMELESSNESS DEFINED

Individuals who lack a regular, fixed, and adequate nighttime residence.

**1 in 45**  
children in the U.S. are homeless at some point in a year!



**Kids experiencing homelessness are:**

- 2** times more likely to have learning disabilities than non-homeless kids.<sup>2</sup>
- 4** times more likely than their peers to show delayed development.<sup>2</sup>
- 6** months behind academically every time they move to a new school.<sup>2</sup>

**3000** children in Allegheny County experienced homelessness last school year. There are **43** school districts in Allegheny County. **ALL OF THEM** have homeless kids.<sup>3</sup>

Sources: 1. National Center on Family Homelessness; 2. National Center for Homeless Education; 3. PA Department of Education



The Homeless Children's Education Fund works with 27 homeless agencies in Allegheny County to create hope through learning.



## How HCEF Helps Kids:

### Learning Centers

Spaces in homeless shelters built just for kids equipped with technology and resources for educational support.

### Building Blocks for Success Afterschool & Summer Programs

Comprehensive educational support for kids living in homeless agencies.

### Backpack Distribution

Annual distribution of backpacks full of school supplies for kids.

### Mini-grants & Field Trips

Funds for shelters to use on community excursions and educational projects.

### Enrichment Programs

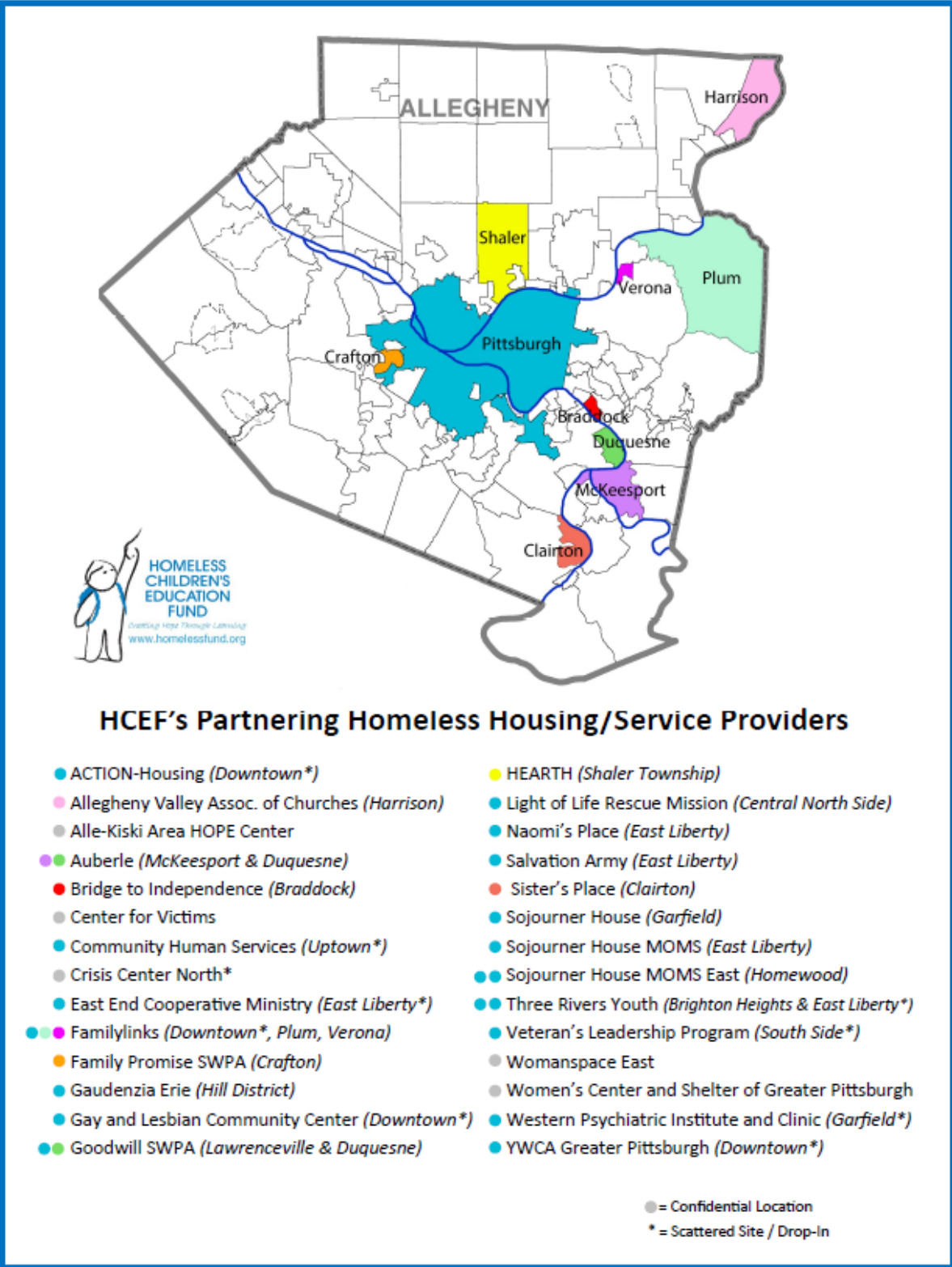
Creative, hands-on experiences to enhance learning and have fun!

### Hope Through Learning Award

Funding for students who have been homeless, heading on to post-secondary education.

Homeless Children's Education Fund • 2020 Smallman Street, 2nd Floor • Pittsburgh, PA 15222  
P: 412-562-0154 • E: info@homelessfund.org • www.homelessfund.org





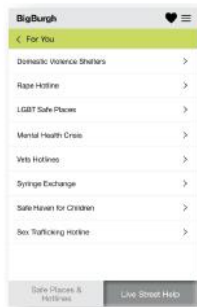
**For You:** Customize the results . . . or go straight to **All Services**



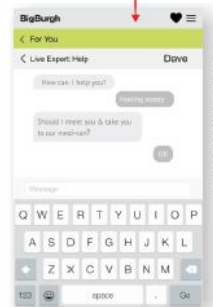
*Offerings divided between everyday needs and urgent needs*



**Click for Listings:** See services mapped out *and* listed in distance order

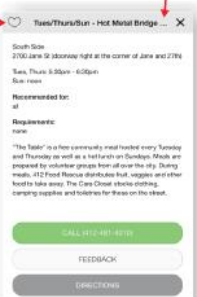


**find Safe Places fast**



**Live Street Help** connects Police and the homeless themselves with nearby mobile outreach workers ("Email Street Help" appears when no outreach is online)

**Save Listings to Favorites** (& recover them when off-line!)



**Click for Full Info:** Then get the lowdown on how a service works.



# How to BigBurgh Your iPhone

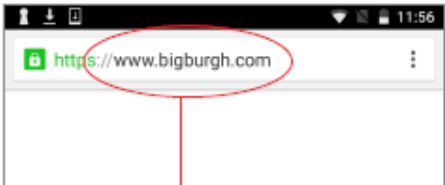


**It's a web site . . .**  
Just type "bigburgh.com" in your browser.  
(It's not an app in the app stores.)

**that looks like an app!**  
Put a BigBurgh icon on your home screen,  
and it will be one touch away just like "real" apps.



# How to BigBurgh Your Android Phone



## It's a web site . . .

Just type "bigburgh.com" in your browser.  
(It's not an app in the app stores.)

## that looks like an app!

Put a BigBurgh icon on your home screen,  
and it will be one touch away just like "real" apps.

